

RFUW Regional Programme 2007/2008

The following document provides information on 2007/2008 regional programme and the components that form its structure. This document will provide potential staff, players, parents and volunteers with an overview of the forthcoming programme.

Rationale

The Rugby Football Union for Women's (RFUW) main aim is to improve playing standards at all levels of the game, which includes regional level (see Ethos below and Player Pathway on Page 4). We are committed to working to provide the best environment for player development through training and appropriate competition to maximise player potential. Individual player development alongside unit and team development are inextricably linked with the standard of coaching within the game. Therefore coach development is an inherent part of our player development plan at all levels.

The regional programme aims **to provide every player with the opportunity to maximise their potential and be 'the best they can be' at all levels of the game.**

Objectives

- To identify talented female rugby players, allowing them to progress along the RFUW player pathways
- To provide players with a performance and development structure that caters for the local need of the Region and age groups.
- To increase the number and improve the standard of regional coaches and volunteers within the women's and girls' game.

The junior regional programme will be run in accordance to the RFUW Under 15s & 18s laws for 2007/08 and offers players opportunities to play within a full squad with the potential of taking the next step on the Player Pathway.

The senior programme will be run in accordance to full IRB laws that all teams play to within the Premiership, Championship 1 & 2.

Senior Programme Ethos:

- In the 07/08 season the Regional Programme in the most part, is considered as a step up from club rugby
- It is another opportunity for additional quality competition on top of the Leagues and Cup Competitions
- It is a development opportunity for players and volunteers alike
- It is an integral part of the Player Pathway as the Regional Programme feeds into the Super League & Player Development Academies which, in turn, is the selection process for the Super 4s leading to the England Squads for both England U20s and the Seniors

Junior Programme Ethos:

- The Programme is a step up from club and county rugby
- The Programme presents the necessary opportunity for U15s and U18s to play in quality full-sided games

- It is a development opportunity for players and volunteers alike
- It provides essential quality competition for girls who are involved with many other sports
- It is a step on the Player Pathway (see Talent ID Process on Page 3)

Statement from Performance Department

The RFUW Performance Department views the Regional Programme at all age groups as an important part of the player development process. Furthermore the Regional Programme also forms an integral part of the RFUW's Talent Identification, Selection and Development process. Over the years many of the current England Senior Squad have progressed from Regional Rugby, through the PDA/HPA programme, taken part in the Super 4 competition and subsequently been selected for England Squads.

The majority of the 2006/2007 England U19 squad also progressed from Junior Regional squads over the previous season and all of the 2007/2008 U18 Talent Development Group and U15s Schools of Rugby players will be selected from regional squads.

The RFUW continually seek input and feedback from Regional coaches regarding players, with many Senior Regional Matches being filmed with footage returned to RFUW Performance staff and used as a selection tool for Super League and HPA's.

- Any player selected for the Super 4's (outside of the England Senior Squad) must be available to play regional rugby to be considered for future selection.
- Any player selected into the England U20 squad must be available to play Regional Rugby to maintain their place in the squad and to be considered for future selection.
- All players selected into the U18 Talent Development Group (TDG) must be available to play regional rugby to maintain their place in the group and to be considered for future selection.
- All players selected to attend the U15 Schools of Rugby (SoR) must be available to play regional rugby to maintain their place at the SoR and to be considered for future selection.

The regional programme is proving vital in the identification and development of future England players. The RFUW continues to look to the future and we envisage that the regional programme continues to play a fundamental part of producing the players of the future - taking England Women's Rugby into the World Cup in 2010 and beyond.

Eligibility

All Players must be registered with the RFUW

Players are eligible to trial for the region in which they live or the region in which their Club or school / college / University is located.

Once a player has been selected for a Region / squad they will be deemed a member of that Region / squad and must remain with that Region / squad until the end of the programme.

Seniors

- Players must be over the age of 18 on or before the Senior Trials (16th December)

- Players who turn 18 **after** the 1st Sept 07 and before the senior trials can trial for either seniors or U18s. If a player is not successful in the senior trials, they are still able to trial for the U18s in January. Once selected into a squad, there should be no movement between age-groups
- Must be eligible to play for England
- All seniors outside the top 44 are eligible for the Programme (that includes those within the U20s set-up)

U18s

- Players must be aged over 15 years old and under 18 years old at Midnight on 31st August 2007
- Must be eligible to play for England
- England U20 Squad members **MUST** attend the trials and all training days to be considered for the Regional Programme and will be tagged for the trials
- TDG players **MUST** attend the trials and all training days to be considered for the Regional Programme and will be tagged for the trials
- If playing club rugby outside of England, then you must be playing within the U18s age-band

U15s

- Players must be over 12 years old and under 15 years old at midnight on 31st August 2007
- Must be eligible to play for England
- Schools of Rugby Players **MUST** attend the trials and all training days to be considered for the Regional Programme and will be tagged for the trials.

TALENT ID PROCESS

Senior Talent ID

In order to be considered for nomination for Super League and HPA's players must be recommended / nominated by their Regional coach.

Players invited to the HPA's will have an opportunity to push for selection into the Super 4 trials and the resulting Super 4 matches which in turn is selection for the England Senior Squad.

U18 Talent ID

In order to be considered for nomination for U18 HPA's players must be recommended / nominated by their Regional coach.

Players invited to the U18 HPA's will have an opportunity to push for selection into the Talent Development Group which operates throughout the year. To be considered for any future Performance programmes, players need to be recommended / nominated by regional coaches.

U15 Talent ID

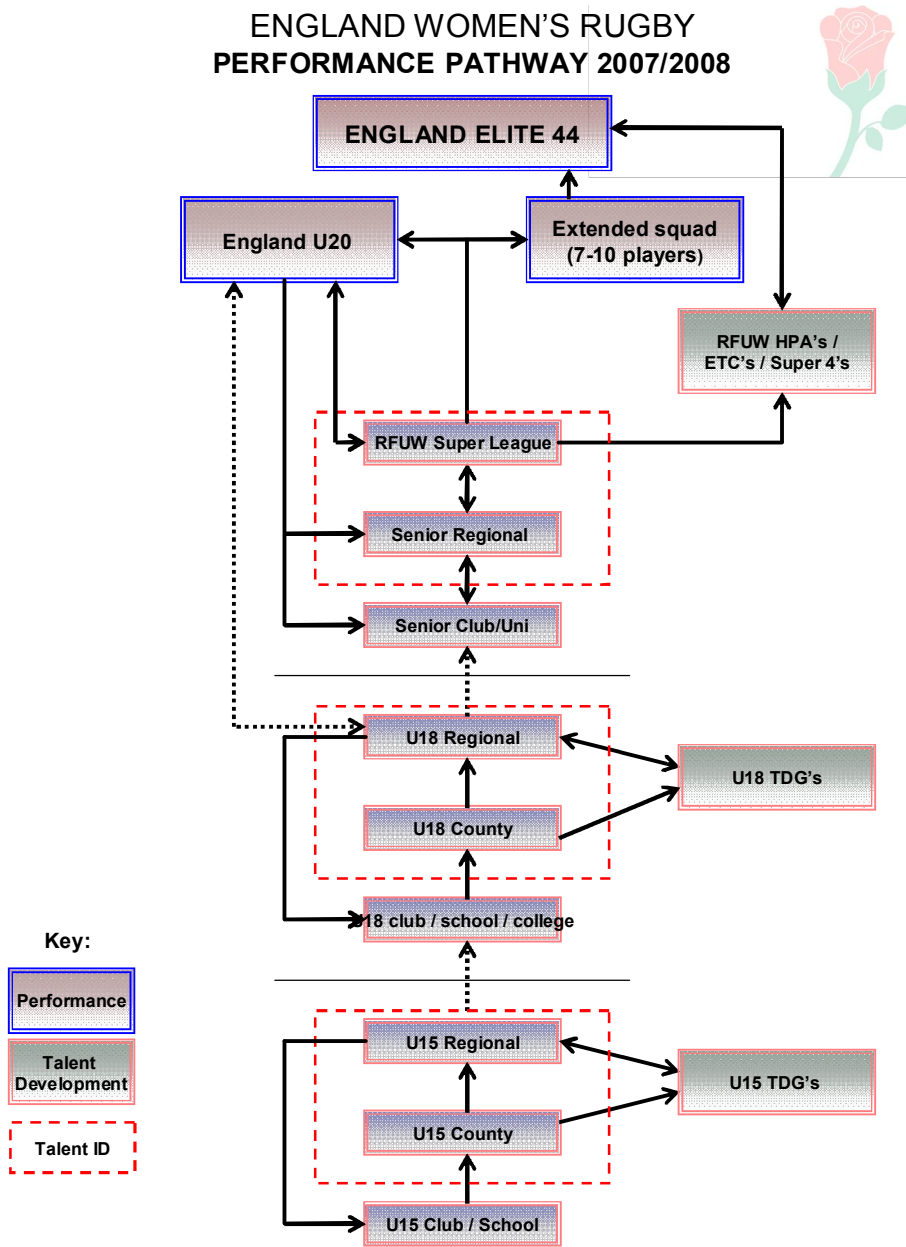
In order to be considered for nomination for U15 Schools of Rugby selection days players must be recommended / nominated by their Regional coach.

Players invited to the U15 Schools of Rugby selection days will have an opportunity to push for selection into the Schools of Rugby which operates throughout the year by the RFU constituent bodies. To be considered for any future Performance programmes, players need to be recommended / nominated by regional coaches.

Further information regarding all Performance Programmes will be sent to all Regional Programme Managers, Squad Managers and Regional Coaches as well as being posted onto www.rfu.com (women's rugby) where appropriate.

Current Player Pathways

The regional programme forms an integral part of the RFUW's talent identification programme and provides players with a progressive pathway. The regional programme allows RFUW performance staff the opportunity to identify and monitor players who demonstrate the potential to progress within the game.



Programme Details and Programme Calendar

In order to participate fully in the programme, please take note of all dates below when your squad will be training and playing:

Date	Activity
16 th December 2007	Senior Regional Trials – all trials are an open process
19 th January 2008	Youth Trials option & Senior Training
20 th January 2008	Youth Trials option – most trials are a closed process through the counties
27 th January 2008	Senior Training
3 rd February 2008	Senior Match 1 & Youth Training
9 th February 2008 (Sat)	Senior & Youth Training
10 th February 2008	Senior Match 2 & Youth Match 1
24 th February 2008	Senior Training
9 th March 2008	Senior Match 3 & Youth Training
16 th March 2008	Senior Regional Final & Youth Match 2
20 th April 2008	Youth Training (can be done on the Saturday instead)
27 th April 2008	Youth Training (can be done on the Saturday instead)
10 th May 2008	U15s Youth Regional Tournament @ Lichfield RFC
11 th May 2008	U18s Youth Regional Tournament @ Lichfield RFC

Fixtures

SENIOR FIXTURES 2007/08

Match 1 – 03/02/08	Match 2 – 10/02/08	Match 3 – 09/03/08
TV V WM	WM V NE	E V WM
SW V SE	Y V E	NW V TV
Y V NW	TV V SW	SW V EM
S V E	EM V NW	SE V Y
NE V EM	S V SE	NE V S

U18 FIXTURES 2007/08

Match 1 – 10/02/08	Match 2 – 16/03/08
WM V NE	SWS V WM
Y V E	SE V SWN
SWN V SWS V TV	NE V Y V NW
EM V NW	E V S
S V SE	TV V EM

U15 FIXTURES 2007/08

Match 1 – 10/02/08	Match 2 – 16/03/08
WM V NE	SWS V WM
Y V E	SE V SWN
SWN V SWS V TV	NE V Y V NW
EM V NW	E V S

S V SE	TV V EM
--------	---------

E = East	EM = East Midlands
NE = North East	NW = North West
S = South	SE = South East
SW = South West	SWN = South West North
SWS = South West South	TV = Thames Valley
Y = Yorkshire	WM = West Midlands

NB. We have tried to ensure that each region is playing different regions to last year (and most previous years) – as much as possible without making the journeys ridiculous.

SENIORS

The competition will be run as one large league table. The 1st and 2nd placed teams will play in the final after a curtain-raiser of the 3rd and 4th place play-off. Scoring is below.

GAME POINTS SYSTEM	IF 2 TEAMS DRAW FOR POSITION
WIN: 5 DRAW: 3 LOSS: 1 1 BONUS POINT FOR 4 OR MORE TRIES 1 BONUS POINT FOR LOSING TEAM WITHIN 7 POINTS	POINTS DIFFERENCE TRIES SCORED YELLOW CARDS/RED CARDS TOSS OF A COIN

YOUTH U15s & U18s training games

The Youth games are preparation games only there is no league

Venues

To be organized by the Regional Programme Managers on a local level. There **MUST** be consultation with the opposing Programme Managers so that a convenient location can be found meaning as little travel as possible.

The Senior Final & Youth Tournament will be organized by the RFUW and the Regions will be notified of specific details nearer the time.

Regional 'Splits'

The RFUW is structured in accordance with the Sport England regional split. The counties listed below are dictated from Sport England. These are subject to slight change but will be set by Sept.

Region	Areas
1. Yorkshire	Barnsley, Bradford, Calderdale, Doncaster, East Riding of Yorkshire, Kingston-upon-Hull, Kirklees, Leeds, North Lincolnshire, North East Lincolnshire, North Yorkshire, Rotherham, Sheffield, Wakefield, York
2. West Midlands	Birmingham, Coventry, Dudley, Herefordshire, Sandwell, Shropshire, Solihull, Staffordshire, Stoke-on-Trent, Telford & Wrekin, Walsall, Warwickshire, Wolverhampton, Worcester

3.East Midlands	Derbyshire, Derby City, Leicestershire, Leicester City, Lincolnshire, Northamptonshire, Nottingham City, Nottinghamshire, Rutland, Bedfordshire
4.East	Cambridgeshire, Essex, Hertfordshire, Luton, Norfolk, Peterborough, Southend-on-Sea, Suffolk, Thurrock
5.North West	Blackpool, Blackburn with Darwen, Bolton, Bury, Cheshire, Halton, Knowsley, Lancashire, Liverpool, Manchester, Oldham, Rochdale, St Helens, Salford, Sefton, Stockport, Tameside, Trafford, Warrington, Wigan, Wirral
6.South East	Kent, East Sussex, West Sussex, Medway
7. South	Hampshire, Surrey, Isle of Wight
8.Thames Valley	Berkshire, Oxfordshire, Middlesex, Milton Keynes, Buckinghamshire
9.North East	Durham, Northumberland, Teeside, Tyne & Wear
10.South West (South)	Cornwall, Devon, Somerset
11.South West (North)	Dorset, Gloucestershire, Wiltshire

A player may play for the region in which their club / uni is situated or the region in which they live. Once a player has selected the appropriate region, they must stay with that region for the duration of the programme. English players at a Scottish / Welsh or Irish Uni are eligible to play as long as they are individually registered with the RFUW. (Please contact RFUW office to receive forms and process – 020-8831-79996)

Due to exceptional circumstances a player may be granted permission by the RFUW to play for another region, Any player who wishes to apply for dispensation to play for another region, must apply in writing to the RFUW Competition's Officer stating the reasons why.

If you have any queries regarding the regional splits please contact the RFUW on 0208 831 7996 or email RFUW@therfu.com

Funding and Finance

The RFUW Regional Programme is an important part of the RFUW talent identification and player development programme and is the largest programme in central operation in terms of volunteer staff, players, training and matches. In order to deliver a quality, well managed Regional Programme, the financial commitment from the RFUW is substantial. However, we would be unable to deliver the programme without contribution from the players involved.

The Programme Fee covers the players for:

- Match Fees
- Post-match meals
- Some Team Travel to Matches
- Medical / Staff Costs
- Staff Travel
- Match Officials
- Programme Administrator
- Venue costs (Trials, training, triangular matches, Senior Final or Youth Tournament)

1. All players will be required to pay an on-line trials fee of £5

2. All selected players will be required to pay a further on-line Programme Fee of £40

NB. This will be done through Pay-pal this year so that all funds can be held centrally

Once the contribution of £45 has been made by the players, they may be required to make further payments to the regional programme. For example, if the Programme Manager requires accommodation for more than one match, there will be a contribution expected if it cannot be covered by the budget. Any personalized kit and personal travel costs will also be expected to be covered by the players where the budget does not allow.

Once running costs have been met any additional money will be given back to the region where each region can specify how they wish this money to be spent.

Distribution of funds to regions

It has been recognised that teams who are required to travel greater distances for the Youth Tournament were required to contribute more financially than teams who were closer to the venues. To remove these inconsistencies for the Youth Tournament, we will be allocating greater funds to those with greater distances to travel from our Nationally held fund. We will also provide accommodation on top of travel for the furthest based Regions for the Youth Tournament, and extra travel for the Senior Final is also subsidized by this fund.

Hardship Fund

For those players unable to afford the requisite amount, they can apply to the Programme Manager, using the Hardship Application Form to make a minimized contribution to the Programme. If there are only 3 or 4 applications per region, this can come from the regional budget. If there are more in any one region that meet the criteria, that region can apply to the RFUW for extra funding. The usual criteria for Hardship Fund are as follows:

- U18s or U15s on Free Schools Dinners
- Seniors on benefits

Kit

Personal kit packages have been put together for each player within the programme to purchase. They will consist of shorts, women's fit t-shirt, small gym-bag and turbo training top for the cost of £33. This will be available to purchase on-line from the 17th December to 19th December 2008 in order to receive them for the majority of the programme. You will find out more about this at the trials.

What happens next?

On completion of your form and having received payment through Paypal, you will receive a confirmation email that will signpost you to the trials section of our website. Here you will find the details of the Regional Trials that you have applied to attend along with timings and directions. Please print off your confirmation email and bring it with you on the day.

This year, selection will be an extremely quick process with players finding out through web pages as to who has been selected for the relevant squads. This is mainly to ensure that we have an appropriate length of time to order personal kit packages to try and avoid delay in players receiving their clothing.

We wish you all the best with your trials and hope to see you as part of the RFUW's Regional Programme this season!